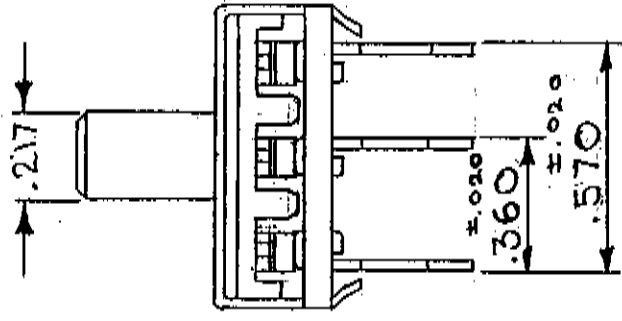
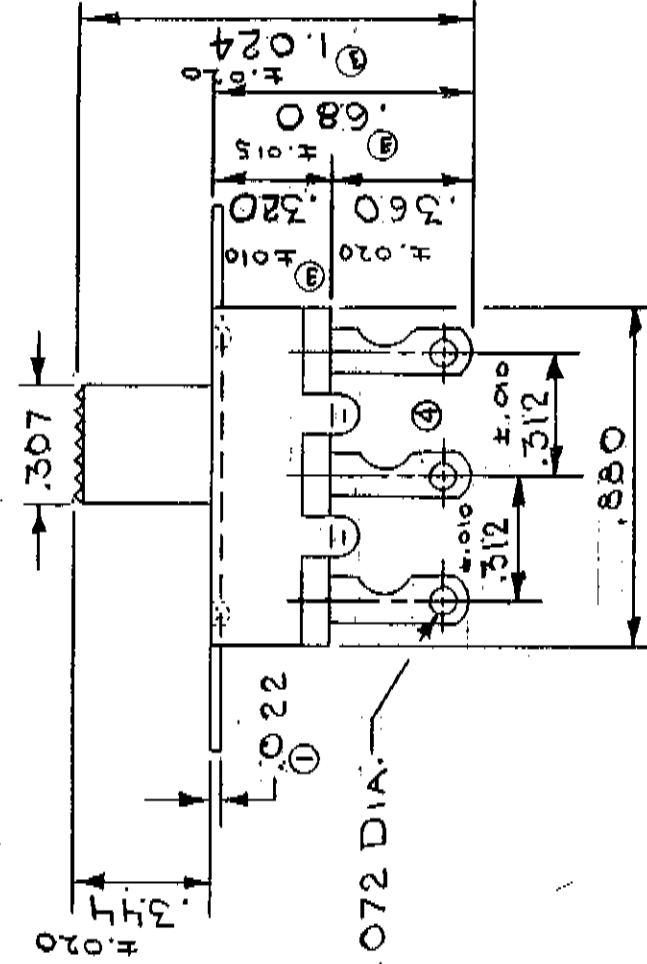
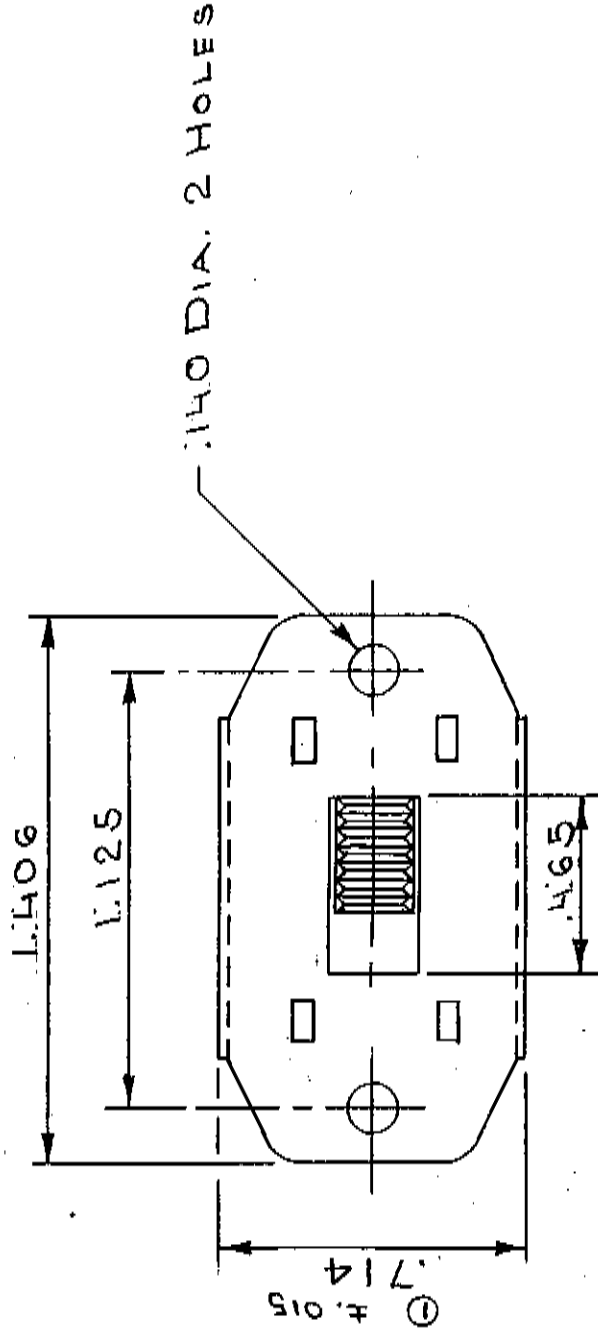


GF-361-0000



ALL SCREW THREADS TO BE CLASS 2 FIT (AMERICAN STANDARDS) UNLESS OTHERWISE SPECIFIED. DIMENSIONS ARE IN INCHES. DO NOT SCALE DRAWING.

REVISIONS		PDF File Made		VARIATIONS ON FINISHED DIMENSIONS UNLESS OTHERWISE MARKED			
4	ADDED 1/2 MOON FIG. 4-21-70 (B)	BASIC DIMENSIONS UP TO 6	FRACTIONAL DIMENSIONS	DECIMAL DIMENSIONS	ANGULAR DIMENSIONS	± 1/2°	
3	W.S. 2-5-68 W.S. 2-15-67 (1019)	UP TO 6	± 1/64	± .005	± 1/2°		
2	W.S. 8-361 12-4-67 (1019)	ABOVE 6 TO 24	± 1/32	± .010	± 1/2°		
1	W.S. 10-4-67 10-4-67 W.S. 730, 030, 330 690 & 1,034 TM	ABOVE 24	± 1/16	± .015			
0	ENG. AP. 8-10-67						

SLIDE SWITCH

3P DT

FIRST MADE FOR C-W

DRAWN BY X 6-29-67

CHECKED BY Pa 6-30-67

Continental-Wirt Electronics Corp. PHILA., PA. 19144
GF-361-0000